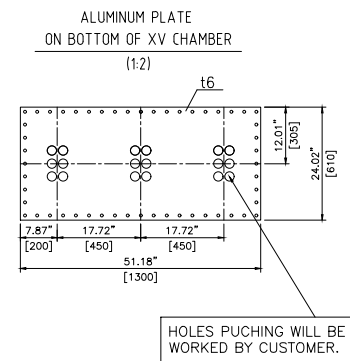


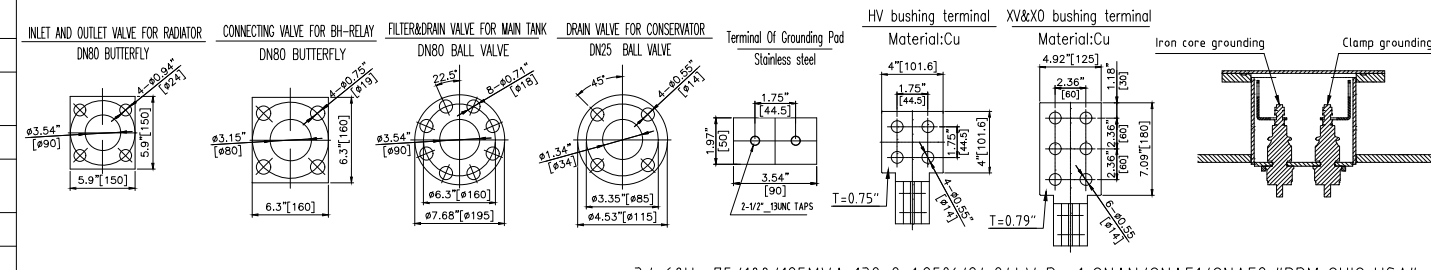
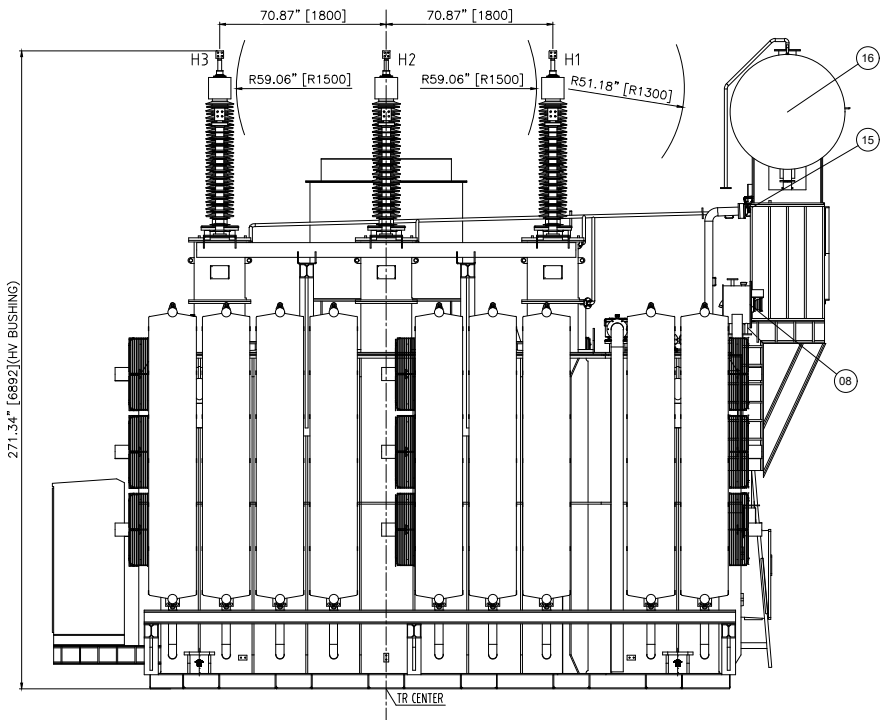
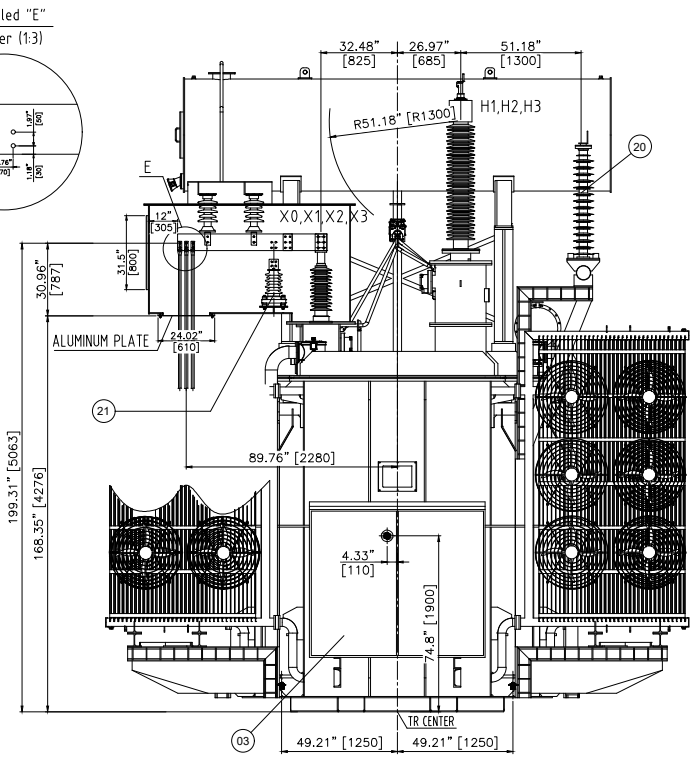
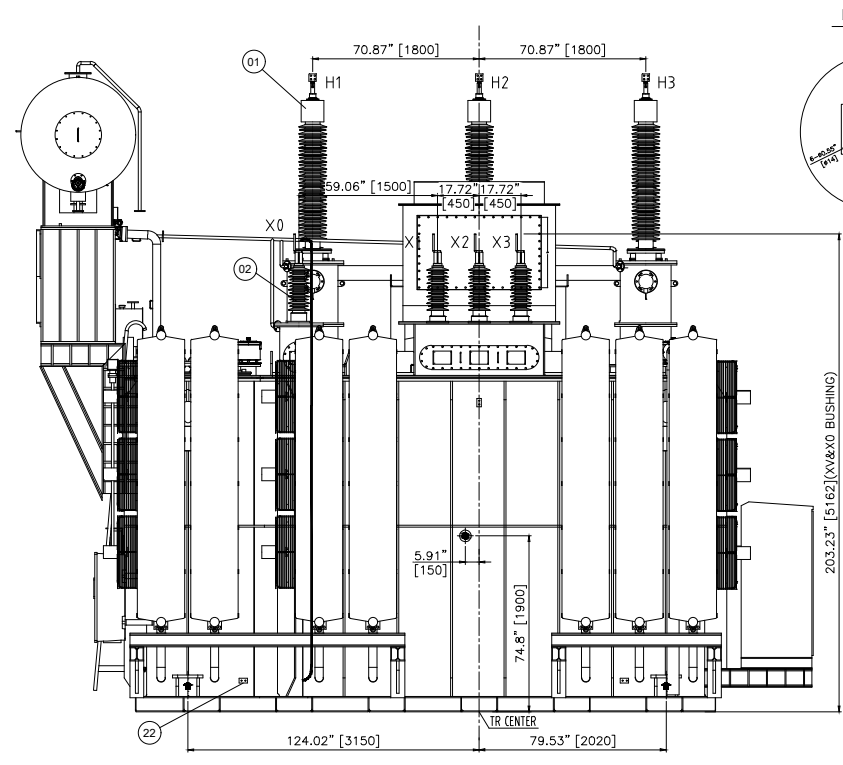
- # NOTE #
1. DIMENSION TOLERANCE : ± 5%.
  2. ALL DIMENSIONS ARE IN MILLIMETERS.
  3. DIMENSION AND WEIGHT WILL BE CHANGED SLIGHTLY AFTER DETAIL DESIGN.
  4. THE COVER IS FASTENED WITH BOLTS AND NO MANHOLE ON IT.
  5. COMPLETE CENTER OF GRAVITY.



List of accessories			
No.	Name	Model	Qty
01	HV bushings	BRDLW-145/630	3
02	XV&X0 bushings	BFW-40.5/4000	4
03	Control box	Outdoor type	1
04	Winding temperature indicator	BWR-4/YE	2
05	Oil temperature indicator	BWY-804A/YE	1
06	Pressure release valve	YSF9-55/130	2
07	Oil level gauge for main conservator	YZF3-250	1
08	Oil level gauge for OLTC conservator	YZF2-140	1
09	Breather for main conservator	MX1-5	1
10	Breather for OLTC conservator	MX1-0.5	1
11	Brass round flange ball valve	DN80	1
12	Brass round flange ball valve	DN25	4
13	On load tap changer	CM2I-500/170C-10193W	3
14	Motor drive unit	CMA7	1
15	Gas relay	QJ9-80A	1
16	Conservator with rubber bag	φ1200	1
17	Ground bushings	BF-1/300	2
18	Fan	D700	30
19	Dispersed radiator	PEC520	16
20	HV SURGE ARRESTER	108kV Class,84kV MCOV	3
21	XV SURGE ARRESTER	21kV Class,17kV MCOV	3
22	Grounding pad	Stainless steel	7
23	Impact reconder	Digital type with GPS	2
24	Manhole	-	1

Weight table:

Designation	Weight
Oil weight	83776 lbs (38000 kg) 11330gal
Total weight	297624 lbs (135000 kg)
Transport weight(without oil)	171520 lbs (77800 kg)



3	2024.10.09	FOURTH ISSUE
2	2024.09.27	THIRD ISSUE
1	2024.09.19	SECOND ISSUE
0	2024.09.16	FOR APPROVAL
NO.	DATE	DESCRIPTION OF REVISION
DESIGNED		W.XIE
CHECKED		Y.G.MA
APPROVED		Z.W.TIAN

SFZ-125000/138  
Outline Drawing

3φ 60Hz 75/100/125MVA 138±8x1.25%/24.94kV Dyn1 ONAN/ONAF1/ONAF2 "PDM OHIO USA"

